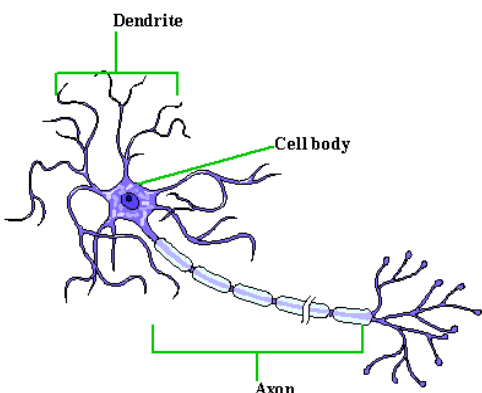


Invitation to Participate in Research

Have you been diagnosed with Motor Neurone Disease (MND) in the last 12 months?

South Western Sydney
Local Health District
Communication & Assistive
Technology Clinic



Contact Information:

If you would like more information or are interested in being a part of this study please contact one of the Clinic Coordinators:

- Alicia Gibb
- Manasi Thornley
- Monique Signorelli

Phone: (02) 8738 4701 or
(02) 87384702

Email:
swslhd-catclinic@health.nsw.gov.au

Title: Recruitment Flyer
Liverpool Hospital, Version 2.0, 8/1/2019
Master Version 3; Dated 03/12/2018

Researchers within Sydney South West Local Health District (SWSLHD) in collaboration with The University of Sydney and The University of Technology Sydney are seeking volunteers to participate in a research project for people with Motor Neurone Disease (MND).

What is the Study about?

Our goal is to look at the quality of life of people with MND who access Augmentative and Alternative Communication (AAC) such as electronic tablets, switches or eye gaze. We will also look at the use of Environmental Control Units (ECU) to control the television, air conditioner etc.

Who Can Participate?

- If you have a definitive diagnosis of MND
- Your MND diagnosis is within 12 months of the baseline assessment
- You are aged 18 years and over
- If you reside in South Western Sydney Local Health District
- If you are able to communicate in English

What's Involved?

- Complete surveys at the start and end of your involvement within the study
- Trial of suitable adaptive technology
- 30 minute interview at the completion of the intervention

Will I be paid to take part in the study?

There are no costs to participate in this research study, nor will you be paid to participate. Participation in the study is voluntary and you can withdraw at any time without affecting your care.



LIVERPOOL
HOSPITAL



Health
South Western Sydney
Local Health District